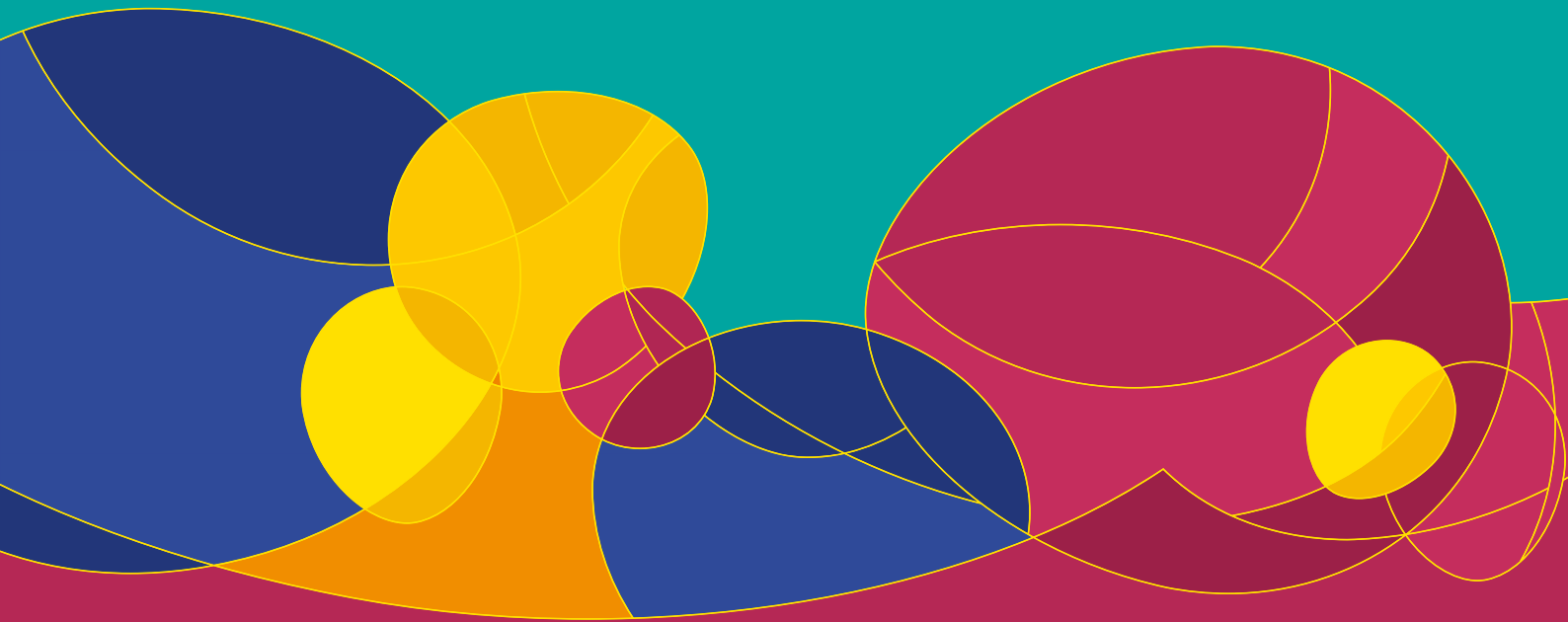




THE FOURTH ESWI
INFLUENZA
CONFERENCE

11-14 SEPTEMBER 2011 | MALTA



TAILOR-MADE CONFERENCE PROGRAMME FOR PUBLIC HEALTH OFFICIALS

PUBLIC HEALTH FACTS

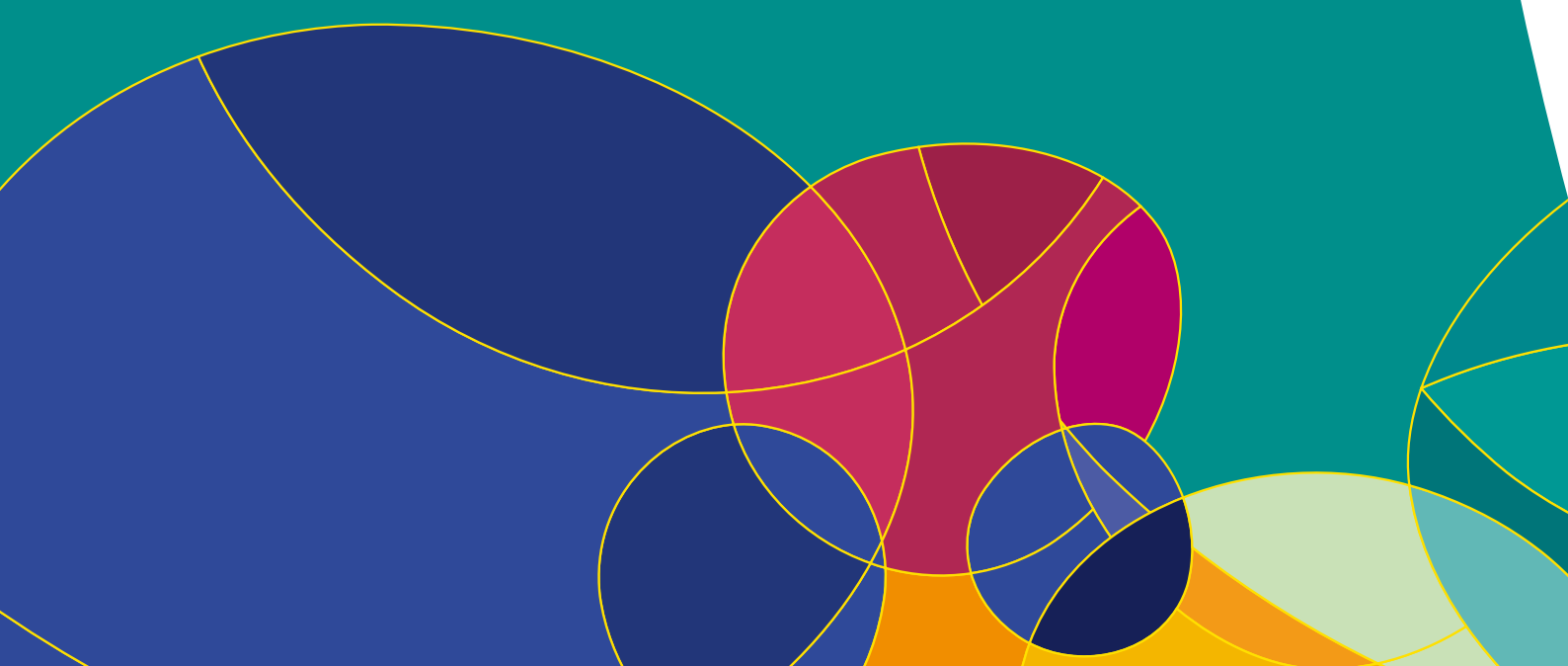
- European health care systems are among the best in the world. And yet, in Europe, influenza claims more lives than traffic accidents. In fact, hospitalizations and deaths after an influenza infection mainly occur in at-risk groups: persons over 60 years of age and some with chronic illnesses (mainly diabetes, heart or lung disease).
- Influenza is, however, a preventable disease. Influenza vaccines have been used for more than 60 years now and have proven to be very safe and effective. For that reason, the World Health Organization (WHO) strongly recommends routine vaccination of at-risk groups and it urges Member States to vaccinate at least 75% of the elderly. Unfortunately, very few countries achieve this target.
- Antiviral drugs for influenza are available to treat and prevent the illness. Stockpiling combinations of antiviral drugs is hence part of a country's pandemic preparedness plan. Detailed planning is essential to ensure a coordinated response to an influenza pandemic, both at the national and international levels.

The Fourth edition of ESWI's Influenza Conferences will be held in Saint-Julian's, Malta, from 11 – 14 September 2011. The conference will have two clearly delineated programme tracks: one for scientists and one for public health officials.

The conference will be attended by 1,500 scientists, including all top experts in the influenza field. Ample networking opportunities are built into the programme.

The public health officials' programme, called 'Science Policy Interface', will 'translate' the newest scientific data and present good practices about influenza policy measures and recommendations.

Top experts will bring a mixture of tailor-made lectures, good practices, case studies and workshops. In seven sessions, they will answer questions like: Why should influenza be a public health priority? Is influenza vaccination cost-effective? What is the role of governments, healthcare providers and pharmacists in influenza prevention? Should we be prepared for another flu pandemic? How important is communication for public health officials? Why are bird and swine flu dangerous for humans?





*from influenza
science to influenza
policy in seven
sessions*

PRELIMINARY PROGRAMME

SUNDAY 11TH SEPTEMBER 2011

18:30-19:30	OC OPENING CEREMONY
	Confirmed Speakers: – Prof Dr A.D.M.E. Osterhaus, chair ESWI – Mr John Dalli, European Commissioner for Health and Consumer Policy – Prof Dr Peter C. Doherty, University of Melbourne, Australia.
19:30-22:00	WELCOME RECEPTION

MONDAY 12TH SEPTEMBER 2011

08:45 - 09:45	PLENARY SESSION
09:45-10:15	COFFEE BREAK
10:15-12:00	SESSION 1 WHY SHOULD INFLUENZA BE A PUBLIC HEALTH PRIORITY?
	– Chaired by Prof Ab Osterhaus – Facilitated by Mrs Chris Vanlangendonck
12:00-14:00	LUNCH BREAK
14:00-15:45	SESSION 2 MISCONCEPTIONS IN INFLUENZA
	– Chaired by Prof Arnold Monto – Facilitated by Dr Terho Heikkinen
15:45-16:15	COFFEE BREAK
16:15-18:00	SESSION 3 SHOULD WE PREVENT AND TREAT SEASONAL INFLUENZA AND HOW?
	– Chaired by Prof Kristin Nichol – Facilitated by Dr Ted van Essen

TUESDAY 13TH SEPTEMBER 2011

08:45 - 09:45	PLENARY SESSION
09:45-10:15	COFFEE BREAK
10:15-12:00	SESSION 4 WHY IS ANIMAL INFLUENZA DANGEROUS FOR HUMANS?
	– Chaired by Prof Robert Webster – Facilitated by Dr Terho Heikkinen
12:00-14:00	LUNCH BREAK
14:00-15:45	SESSION 5 WILL THERE BE ANOTHER FLU PANDEMIC? SHOULD WE BE PREPARED?
	– Chaired by Prof David Salisbury – Facilitated by Dr Terho Heikkinen
15:45-16:15	COFFEE BREAK
16:15-18:00	SESSION 6 WHY AND HOW SHOULD INFLUENZA VACCINATION BE PROMOTED? AND WHO SHOULD DO IT?
	– Chaired by Prof Jonathan Van-Tam – Facilitated by Mrs Chris Vanlangendonck
20:00-23:00	FAREWELL DINNER

WEDNESDAY 14TH SEPTEMBER 2011

08:45 - 09:45	PLENARY SESSION
09:45-10:15	COFFEE BREAK
10:15-12:00	SESSION 7 INFLUENZA: WHERE DO WE GO? FUTURE RESEARCH, POLICIES AND PRACTICES.
	– Chaired by Prof Peter Openshaw – Facilitated by Dr Ted van Essen
12:00-13:00	CLOSING CEREMONY
13:00-14:00	LUNCH

Top experts will bring a mixture of tailor-made lectures, good practices, case studies and workshops (each session will have several topics covered). Experienced facilitators will coordinate the sessions. Ample time for questions and answers will allow for lively debates.

Updates of the ‘Science Policy Interface’ programme will regularly be available on www.eswiconference.org.

SCIENTIFIC ADVISORY BOARD

- Dr. R. Amaral-Marques
- Dr. G.A. van Essen
- Dr. T. Heikkinen
- Dr. P. Openshaw
- Dr. A.D.M.E. Osterhaus
- Dr. R. Prymula
- Dr. T.D. Szucs
- Dr. S. van der Werf
- Dr. A. Monto
- Dr. G. Gabriel
- Dr. B. Lina
- Dr. C. Hannoun
- Dr. B. Palache
- Dr. J. Katz
- Dr. R. Webster
- Dr. J. Van-Tam
- Dr. D. Swayne
- Dr. K. Nichol
- Dr. D. Smith
- Dr. R. Krug
- Dr. N. Cox
- Dr. M. Peiris
- Dr. D. Salisbury

ABOUT ESWI

The European Scientific Working group on Influenza (ESWI) is a partnership organization of stakeholders with a clear mission: to reduce the number of influenza victims in Europe.

www.eswi.org

Partnership organizations like ESWI are established to meet specific objectives and to undertake projects to address problems that neither partner could tackle adequately on its own. A successful long-term partnership is built on common grounds. In the case of ESWI, this common ground is a social concern to improve public health in Europe.

If you wish to stay informed of the latest influenza news, please subscribe to ESWI's e-newsletter for Public Health Officials. Subscription (free of charge) via www.eswi.org

📄 Join us on facebook: www.facebook.com/EuropeanScientistsFightingInfluenza

📄 Check our online influenza knowledge centre for healthcare workers at www.flucentre.org

📄 Register to our closed community for Public Health Officials at www.flucommunity.org

THE VENUE

The Fourth ESWI Conference will take place at the InterContinental Hotel, Saint-Julian's, Malta. Additional accommodation can be booked in various five-, four- and three-star hotels in the near vicinity of the conference hotel. Reservations can be made through GCO, the conference organizer.

CONFERENCE LANGUAGE

The official language of the Fourth ESWI Influenza Conference will be English.



OFFICIAL CARRIER

Air Malta has been appointed the official carrier for the Fourth ESWI Conference. All delegates benefit from a 10% discount on published rates for travel on Air Malta scheduled services—further information is available on www.eswiconference.org.

REGISTRATION FEES

EARLY	FULL	LATE
€ 700.00	€ 850.00	€ 1,050.00

REGISTRATION RATE CUT-OFF DATES

- Early rate applicable to registrations made prior to 28 February 2011.
- Full rate applicable to registrations made prior to or on 15 August 2011.
- Late rate applicable to registrations made after 15 August 2011.

WHAT IS INCLUDED IN THE REGISTRATION RATE?

- Airport Transfer
- Opening Ceremony on 11 September 2011
- Welcome Reception on 11 September 2011
- Access to all Conference Sessions
- Coffee Break - Refreshments
- Conference Lunches
- Farewell Dinner on 13 September 2011

*On-line registration
is possible on
www.eswiconference.org*



If you have any questions about the Science Policy Interface programme or about the Fourth ESWI Influenza Conference, please contact:

ESWI MANAGEMENT

Mr. David De Pooter
Link Inc, communication consultants
david.depooter@linkinc.be
info@linkinc.be
tel + 32 3 232 93 42

CONFERENCE SECRETARIAT

Mr Simon Dufaur
c/o GCO (Global Conference Organisers)
simon@gcoeuropa.com
tel + 31 184 496 999